



CONVENTIONAL TUNNEL STRUCTURE

Conventional tunnel greenhouses are modular arched structures made of Ø 40-60 round tubing.

Thanks to extremely short delivery periods and quick mounting, even for large surfaces, this kind of greenhouse is in great demand in the plant and flower growing industry.

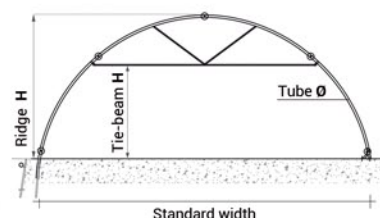
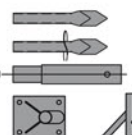


TECHNICAL SPECIFICATIONS

- Hot or Sendzimir Z 275 galvanized iron structure, highly resistant to corrosion
- Structure with or without tie-beam according to the place of installation or the type of crop
- Single or double long-lasting/anti-drip film covering
- Films fixed by means of aluminium profiles (wide range) and roll-up side tubes
- Possibility to include curved purlins and film or polycarbonate base frame
- Film or polycarbonate headends with hinged or aluminium sliding door
- Installation on the ground by means of piles (screw type, if required) or foundation

BASE FIXING

- Pegs
- Anchoring pegs
- Reduced end tube Ø 60x500
- Plates and brackets



TUNNEL

Standard width	Tube Ø	Tie-beam H	Ridge H
4.50 m	40 mm	1.90 m	2.40 m
7.00 m	60 mm	1.90 m	3.00 m
8.50 m	60 mm	2.40 m	3.70 m
10.00 m	60 mm	3.10 m	4.20 m

Door dimensions	Hinge	Sliding	Infill
1.00 x 2.00 m	Single		Film-Polycarb.
2.00 x 2.00 m	Single		Film-Polycarb.
3.12 x 2.30 m	Double		Film-Polycarb.
2.00 x 2.20 m		Single	Polycarbonate
2.80 x 2.20 m		Double	Polycarbonate
3.00 x 2.86 m		Double	Polycarbonate